



Lincolnshire
Safeguarding
Children Board

Annual Report

2012/13

Contents

Foreword by Independent Chair	3
Objectives and Functions of LSCB	4
Board Membership	5
Staffing and Structure	6
What we said we'd do	7
Scrutiny and Accountability	7
Sub-Groups	8
Performance	13
Looking Ahead	13
Finance (Income)	15
Finance (Expenditure)	16

FOREWORD

I am once again pleased to present the Lincolnshire Safeguarding Children Board's Annual Report 2012-2013 which will be formally submitted to the Chief Executive and Leader of the County Council, the Police and Crime Commissioner and the Chair of the Health and Well-being Board. The report provides local partners and the public with an assessment of the performance and effectiveness of child safeguarding across Lincolnshire.

The last twelve months have certainly been challenging and a number of our partners have had to manage a changing landscape particularly in Health, Education and the Police. The terrain has certainly altered throughout the last year which has seen the development of the Clinical Commissioning Groups, the election of the Police Crime Commissioner and an increase in the number of Academies.

Whilst our agencies in Lincolnshire have experienced some significant financial constraints during the last year they have continued to treat safeguarding as a priority and I commend them for maintaining their focus on the safety of children. At a time when budgets have been subject to pressure, further investment has been made to strengthen our capability and extra resources have been identified to support the frontline particularly in tackling child sexual exploitation.

The Board has continued to develop its role as a co-ordinating body and has been involved in piloting a Public Protection Forum which incorporates the other key elements of Adult Safeguarding, Multi-agency Public Protection arrangements (MAPPA), Domestic Abuse and Community Safety. This body has been examining cross-cutting issues such as information sharing protocols; trafficking; Child Sexual Exploitation and the design of a MASH (Multi-Agency Safeguarding Hub) to meet the operational needs of our agencies and increase their effectiveness.

Despite the changing environment, the partnership continues to thrive on openness, transparency and professional challenge. As the Board reviews the way in which it gathers and monitors performance information from across the partnership, and begins to develop a framework that supports audit, evaluation and quality assurance, we believe that we will have a far greater evidence base on which to measure the effectiveness of partnership working. This, in turn, will provide the Board with a clearer understanding of where improvements are necessary. The LSCB is not complacent and it is important to remember:

'Coming together is the beginning. Keeping together is progress. Working together is success'. (Henry Ford)

Chris Cook
Independent Chair

LSCB Objectives and Functions

The objectives of the LSCB are set out in Section 14 of the Children Act 2004 and are:

- a) To co-ordinate what is done by each person or body represented on the Board for the purposes of safeguarding and promoting the welfare of children in the area; and
- b) To ensure the effectiveness of what is done by each such person or body for those purposes.

Safeguarding and promoting the welfare of children is defined as:

- Protecting children from maltreatment
- Preventing impairment of children's health or development
- Ensuring that children are growing up in circumstances consistent with the provision of such effective care.

Regulation 5 of the Local Safeguarding Children Boards Regulations 2006 sets out the functions of the LSCB as follows:

1a) Developing policies and procedures for safeguarding and promoting the welfare of children in the area of the authority, including policies in relation to:

- i) The action to be taken where there are concerns about a child's safety or welfare, including thresholds for intervention;
- ii) Training of persons who work with children or in services affecting the safety and welfare of children;
- iii) Recruitment and supervision of persons who work with children;
- iv) Investigation of allegations concerning persons who work with children
- v) Safety and welfare of children who are privately fostered;
- vi) Co-operation with neighbouring children's services authorities and their Board partners;

1b) Communicating to persons and bodies in the area of the authority the need to safeguard and promote the welfare of children, raising their awareness of how this can best be done and encouraging them to do so;

1c) Monitoring and evaluating the effectiveness of what is done by the authority and their Board partners individually and collectively to safeguard and promote the welfare of children in the area of the authority and advising them on ways to improve;

1d) Participating in the planning of services for children in the area of the authority; and

1e) Undertaking reviews of serious cases and advising the authority and their Board partners on lessons to be learned.

Regulation 5 (2) relates to the LSCB Serious Case Review function and Regulation 6 which relates to the LSCB Child Death function.

LSCB Membership

Strategic Management Group

Chris Cook – Chair	<i>Independent Chair</i>
Debbie Barnes	<i>Lincolnshire County Council Children’s Services</i>
Janice Spencer	<i>Lincolnshire County Council Children’s Services</i>
Roger Bannister	<i>Lincolnshire Police</i>
Peter Adey-Johnson	<i>Lincolnshire Probation</i>
Julie Hall	<i>Lincolnshire Partnership Foundation Trust</i>
Rachel North	<i>West Lindsey District Council (representing all District Councils)</i>
Jane Appleby	<i>Strategic Health Authority</i>
Phil Vickers	<i>Safer Communities</i>
Kay Darby	<i>Lincolnshire Community Health Services</i>
Allan Kitt	<i>Clinical Commissioning Group</i>
Lynne Moody	<i>Clinical Commissioning Group</i>
Bridget McPherson	<i>Schools</i>
James Greenwood	<i>Schools</i>
Michelle Bunn	<i>Schools</i>
Cllr Patricia Bradwell	<i>Lead Member Children’s Services</i>

Operational Delivery Group

Chris Cook	<i>Independent Chair</i>
Roz Cordy	<i>Lincolnshire County Council Children’s Services</i>
Rick Hatton	<i>Lincolnshire Police</i>
Guy Leach	<i>Lincolnshire Police</i>
Dr Robert Wilson	<i>NHS Lincolnshire</i>
Debra Burley	<i>Representing Lincolnshire GPs</i>
Karen Shooter	<i>Domestic Abuse Strategic Management Group</i>
Janice Ward	<i>CAFCASS</i>
Andy Cook	<i>Lincolnshire Youth Offending Service</i>
Keith Laughton	<i>Lincolnshire Probation</i>
Jade Warren	<i>North Kesteven District Council (representing all District Councils)</i>
Sue Proudlove	<i>NSPCC</i>
Andy Payne	<i>Lincolnshire Fire ad Rescue</i>
Ginny Blackoe	<i>Lincolnshire Community Health Services</i>
Michelle Johnstone	<i>Lincolnshire Community Health Services</i>
Elaine Todd	<i>United Lincolnshire Hospitals Trust</i>
Liz Bainbridge	<i>Lincolnshire Partnership Foundation Trust</i>
Joy Gilbert	<i>Lincolnshire Community Health Services</i>
Nicole Hilton	<i>Multi-Agency Public Protection Panel</i>
Leila Barron	<i>Action for Children (representing the voluntary sector)</i>

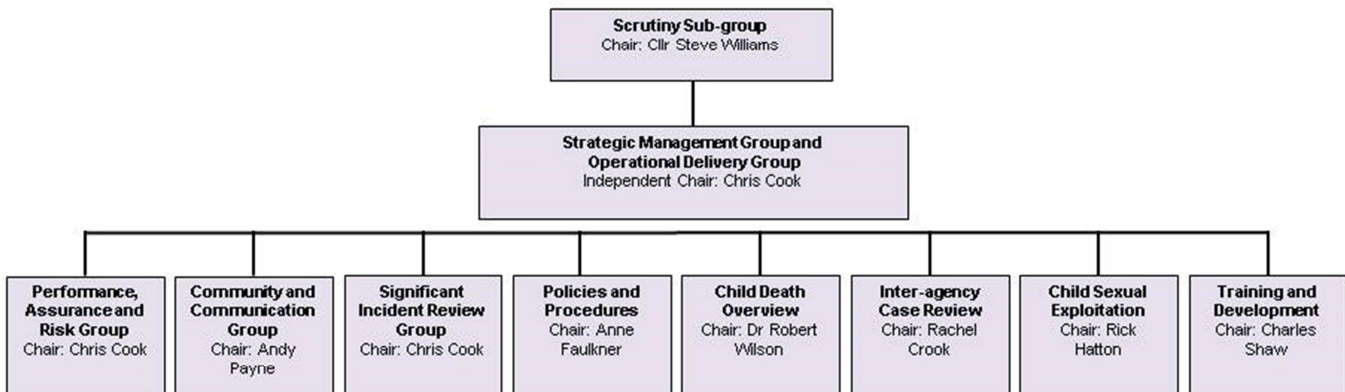
Blanche Lentz	<i>East Midlands Ambulance Service</i>
Mandy Cook	<i>Adult Safeguarding and Dignity Board</i>
Richard Greener	<i>Lincolnshire Road Safety Partnership</i>
Jacque Mullins	<i>SSAFA</i>
Dave Clarke	<i>Lincolnshire Secure Unit</i>
Dr Margaret Crawford	<i>Designated Doctor</i>
Jan Gunter	<i>Designated Nurse</i>
Robin Bellamy	<i>Safer Communities</i>
Michael Mulvaney	<i>Lincolnshire County Council Private Fostering</i>
Phil Taylor	<i>Representing Housing</i>
Sue Roy	<i>Schools</i>
Rachel Shaw	<i>Schools</i>
Sue Barnicoat	<i>Schools</i>

LSCB Staffing

Paula Whitehead	<i>Business Manager</i>
Sue Hill	<i>Administrator</i>
Ben Rush	<i>Administrator</i>
Mary-Ann Round	<i>Training Officer</i>
Max Prangnell	<i>Training Officer</i>
Dan Hawbrook	<i>e-Safety Officer</i>
Anne Faulkner	<i>Local Authority Designated Officer</i>
Nicola Brangam	<i>Local Authority Designated Officer</i>
Viv Thomas	<i>Child Death Administrator</i>

Toni Geraghty, Legal Services Manager, is Legal Adviser to the LSCB.

LSCB Structure



In 2012/13 we said we would:

Continue to expand and develop new training opportunities to increase effectiveness of multi-agency support to children, young people and their families.

We have continued to develop and deliver a multi-agency training programme including a new one day course on Team around the Child (TAC). Numbers accessing LSCB training have increased by almost 400% in the last three years.

Increase co-ordination and effectiveness of resources targeted at reducing Child Sexual Exploitation, and improve early support for those vulnerable to all forms of exploitation.

We have developed a Strategy and Action Plan and identified additional multi-agency resources to employ a Co-ordinator for this area of work.

Respond positively to local and national safeguarding priorities including the new statutory arrangements incorporated in the revised *Working Together* documents.

We have responded to the government's consultation and new guidance published in March 2013. We have asked all agencies to undertake an impact assessment on the implications of the revised guidance within their services. We have also revised our threshold document, *Meeting the Needs*, to ensure that it reflects important changes.

Increase the participation of children, young people, families and the voluntary sector in all area's of the Board's work.

We have increased participation by the Voluntary Sector and are encouraging full engagement in Board business.

Scrutiny and Accountability

The LSCB Scrutiny Sub-group merged with the Lincolnshire Safeguarding Adults Scrutiny Sub-group in 2011 to become the **Lincolnshire Safeguarding Boards Scrutiny Sub-group**. The sub-group is chaired by Councillor Steve Williams. The Sub-Committee forms part of the governance arrangements of LSCB and its role is essential due to the unique independent role of LSCB. The Sub-group's role is to oversee and scrutinise the effectiveness of the partnership arrangements of LSCB.

The Scrutiny Sub-group has an on-going work plan and during the course of 2012/13 has, in relation to the LSCB:

- Considered the work around e-Safety and Cyber Bullying in schools
- Reviewed and monitored the Action Plan in response to the Munro Review of Child Protection

- Examined the changes to the Vetting and Barring Scheme
- Scrutinised the work being undertaken in relation to child sexual exploitation

LSCB Sub-groups

Child Death Overview Panel

The Child Death Overview Panel has continued to review all deaths of children under 18 years. There are approximately 150,000 children in Lincolnshire. In 2012/13 there were 63 child deaths. The Panel reviewed 41 deaths. All deaths are reviewed within 6 months of being eligible for review; delay being caused by criminal enquiries or Coroner's Inquests.

The Panel is required to consider whether each death had any modifiable factors, defined as "The panel have identified one or more factors, in any domain, which may have contributed to the death of the child and which, by means of locally or nationally achievable interventions, could be modified to reduce the risk of future child deaths." In 2012 the panel considered that 2 child deaths in Lincolnshire had modifiable factors that met this definition.

Inter-agency Case Review Group

This year the sub-group has reviewed its Terms of Reference in order to ensure that the reviews undertaken are done so efficiently; are effective and make the best use of the professional expertise available.

Cases reviewed met the following criteria:

- The case highlighted concerns regarding the quality of inter-agency working and the Escalation process had not resolved the issues
- The child had become subject to a Child Protection Plan for a second or subsequent time
- The child had been the subject of a Child Protection Plan for more than 18 months and the Independent Chair or Head of Service considered inter-agency review appropriate
- The Independent Chair had overturned a decision regarding Child Protection Plan at Child Protection Conference
- The case highlighted effective and/or innovative inter-agency working
- The case has been referred for review by the Significant Incident Review Group

Training and Development Sub-group

In January 2013 the LSCB launched a new Learning Management System hosted by the Virtual College with whom the LSCB has worked closely to deliver e-Learning for the last four years. The new system allows Learners to book face to face training on-line using their 'log on' information in the same way they do when accessing e-Learning Modules. Each Learner has a 'Learner Dashboard' that records all LSCB training enabling access to the training details and the materials they will require.

This system is already enabling the LSCB to provide up to date and accurate information to partners on attendance and from April 2013 the analysis of the impact of training will be clearer. Learners can access their LSCB training record and can identify their training needs which will enable professional learning logs to be kept up to date.

Multi-agency face to faced training from April 2012 to March 2013 includes:

- Inter-agency Working Together (2 day): 31 courses; 533 participants
- Child Sexual Exploitation (1 day): 5 courses; 79 participants
- Working with Uncooperative and Hostile Parents (1/2 day): 2 courses; 30 participants
- Achieving Best Evidence (3 day): 2 courses; 34 participants
- Team Around the Child (1 day): 7 course; 190 participants
- GP Training event (1/2 day): 80 participants

The total number of participants undertaking LSCB face to face training during 2012/13 was 946.

The evaluations from face to face training demonstrate that 96% of participants rate the training as excellent or good.

The e-learning continues to build on its previous success with 7102 learners completing a course during the last year compared with 5981 in 2011/12. The courses are continually reviewed in partnership with Virtual College, other local authorities and partner agencies.

At the end of the learning course Learners complete an evaluation which enables both quantitative and qualitative data to be collected.

99% of Learners were either very satisfied or satisfied that the course gave them all the information they needed to know.

97% of Learners would recommend the courses to other people.

Future Priorities:

All courses are and will continue to be reviewed and developed to reflect the revised statutory guidance *Working Together* 2013; findings from Serious Case Reviews both local and national, and to provide a pathway for personal development.

The training group will continue to develop a quality assurance and standardisation system with all partners to ensure continuity and quality of both single and multi-agency training.

Policies and Procedures Sub-group

The Sub-group met five times during 2012/13 and expanded the membership to include a representative from the Children with Disabilities Service.

Further to the learning from a Serious Case Review the group has developed and published a multi-agency Pre-Birth Protocol and a Pathway for identification and treatment of Mongolian Blue Spot. Both can be found on the LSCB website.

In conjunction with the activities of the Child Sexual Exploitation group work has been undertaken to revise the policy and procedure in respect of sexual exploitation of children. This now reflects the current language and terminology in relation to this form of child abuse. The policy links closely to the Missing Children policy.

The sub-group work plan for the future includes:

- Revision of the Safer Recruitment Toolkit to reflect changes in relation to the Disclosure and Barring Service and the review of the Safer Recruitment statutory guidance
- Review of the policy and procedure in respect of safeguarding children with disabilities
- The development of a policy and guidance on the use of physical intervention and restraint

Significant Incident Review Group

This group (formerly known as the Serious Case Review Sub-group) has revised the process for notification to the LSCB of significant and serious incidents.

It is a statutory duty for the LSCB to undertake Serious Case Reviews (SCR) when abuse or neglect of a child is known or suspected and either the child has died or there is cause for concern as to the way in which the authority, the Board partners or other relevant persons have worked together to safeguard the child. In addition the Sub-group also considers cases which do not meet the criteria for a SCR but which can provide valuable lessons about how organisations are working together to safeguard and promote the welfare of children.

The Learning

One SCR has reached completion during 2012/13 and is due for publication following completion of the criminal process. A key recommendation from this review has been the introduction of a multi-agency Pre-Birth Protocol. A second SCR has been commissioned during this period; the findings of which will be published in the coming year.

The Sub-group has commissioned reviews of four cases which did not meet the criteria for SCR; two of these were single agency reviews. In all instances the findings are reported back to the Sub-group and the implementation of Recommendations is monitored through the group. One of the recommendations arising from these reviews was for a more robust monitoring of the effectiveness of the plans for children who are the subjects of Supervision Orders at home. In two of

the reviews considered there were issues relating to young people with a diagnosis of Autism. As a result of these cases, and information from the partner organisations, a recommendation was made to commission a thematic review of Autism in Lincolnshire. Finally, and as a further result of one of the reviews, the Serious Incident Review Group has decided to commission the Performance, Assurance and Risk Group to undertake an audit of Team around the Child cases to consider the effectiveness of the process.

In November 2012 BASPCAN research was published entitled *A study of family involvement in case reviews: Messages for Policy and Practice*. Two families from Lincolnshire, as well as Board partners, took part in this research. The conclusion includes the following: 'The findings from this study suggest that family involvement has the potential to make an important contribution to the learning from reviews of the most serious cases of child death or serious injury arising from abuse or neglect' (Morris, Brandon and Tudor 2012). This is something that Lincolnshire LSCB has long been committed to and the Board is pleased that the research supports the value of family participation in reviews.

Performance, Assurance and Risk Sub-group

This Sub-group (formerly known as Quality Assurance and Risk Management group) has been commissioned by the Serious Incident Review Group to undertake an audit of Team around the Child (TAC) cases and a final report is due to be reported to the Board in the near future.

In the coming year the Sub-group will finalise the development of an on-line system for Section 11 self-assessment which will give agencies the opportunity to undertake the self-assessment as a continuous process rather than a single event. This should provide a more efficient and effective way of monitoring progress within the agency prior to moderation by the Board every three years.

Communities and Communications Sub-group

The Sub-group has now successfully designed and distributed a poster promoting the telephone number of the Children's Services' Customer Service Centre to ensure that Lincolnshire residents are aware of what to do if they have concerns about a child's welfare. Over 4000 posters have been distributed countywide by partner agencies.

The LSCB website has been improved. More than 3000 unique visitors have viewed over 18,000 pages in the last 12 months. 60% of visitors are viewing the site for the first time. The LSCB continues to explore other means of engagement with professionals and the public, including children and young people.

The award winning Stay Safe Days have continued this year in a new interactive format. The first of the new look days was held at Lincolnshire Fire and Rescue's training facility in Waddington before moving on the Butlins in Skegness for a further 3 days of interaction with young people. Agencies delivering short, educational sessions included Lincolnshire Police, Fire and Rescue, the Red Cross, Western Power, Stagecoach and the LSCB e-Safety Officer.

The Stay Safe partnership has delivered safety lessons to more than 400 children in 16 schools in the county.

E-Safety

The LSCB e-Safety Officer has delivered sessions to:

- 5387 children and young people
- 211 parents and carers
- 166 professionals

In addition since April 2012 775 students have received an e-Safety awareness session as part of the *It's That Easy* programme.

In June 2012 the LSCB once again had a stand at the Lincolnshire Show where around 180 young people engaged in a Facebook Quiz on the safe use of social websites.

The e-Safety Officer has provided a number of sessions on *Keeping Safe* to young people with a learning disability acknowledging the added vulnerability of this group of children.

Child Sexual Exploitation Sub-group

The sexual exploitation of children and young people involves exploitative situations, contexts and relationships where young people receive 'something' in return for performing, or having others perform on them, sexual activities. This can occur through the use of technology without the child having any immediate awareness of what is being done.

The LSCB is responding to the increasing prevalence of this form of child abuse brought to its attention by the growing body of information and several high profile investigations elsewhere in the country.

During 2012/13 the Sub-group has:

1. Developed a Child Sexual Exploitation Strategy to identify children and young people who are subjects of, or at risk of sexual exploitation and to disrupt and prosecute offenders. The four elements of the Strategy are:
 - Identification
 - Engagement
 - Disruption
 - Prosecution
2. Devised an Action Plan to which all agencies are working to ensure that children are heard and safeguarded
3. Developed a Risk Assessment Tool to assist professionals in understanding and recognising where exploitation occurs and how to identify those young people at risk
4. Secured commitment of the Board to appoint a Child Sexual Exploitation Safeguarding Co-ordinator to lead the multi-agency response to this issue
5. Revised the Missing Children policy to include those at risk of sexual exploitation
6. Secured a dedicated Police resource to safeguard those children at risk

7. Undertaken awareness raising of this issue with over 8,000 pupils in Lincolnshire schools through the drama production 'Chelsea's Choice', commissioned by the LSCB

In 2013/14 the priorities for this Sub-group are:

- To consolidate and complete the Sub-group Action Plan
- To forge closer working relationships between the statutory agencies and the Voluntary and Community Sector to enable appropriate information sharing
- Continue to raise awareness of on-line risks with both young people and their parents/carers
- To continue to raise awareness of the issues with young people through the drama production, Chelsea's Choice
- To target those young people and families who are 'harder to reach'

Looking ahead

The LSCB is anticipating the publication of the revised *Working Together* statutory guidance. This will be fundamental to a thorough review of the LSCB's work; performance and overall function. The LSCB will need to assure itself that it has appropriate arrangements in place to ensure the effectiveness of safeguarding children in Lincolnshire. The Board will critically evaluate its own performance and ensure that any identified areas of weakness are addressed.

Performance

Children with Child Protection Plans

The number of children with Child Protection Plans is measured as a rate per 10,000 population aged 0 to 17. Over 2012/13 the rate in Lincolnshire has risen with the figure at the end of March 2013 at 21.3 per 10,000. At the end of March 2012 the rate was 17.4 per 10,000. Lincolnshire compares favourably to national statistics and the increase in the numbers of children subject to child protection plans is indicative of the rise in numbers across the country following the publication of a number of high profile cases of child abuse and neglect. Through robust multi-agency working risk to children is being managed at home, where appropriate, rather than in care.

Review of Child Protection Plans

For protection plans to be effective, it is essential that they are reviewed at regular intervals (NI067). This ensures that protection arrangements reflect the family's circumstances and the level of risk the child is exposed to. This standard requires multi-agency commitment with a target of 100% of plans reviewed at the required

interval set. At the end of March 2013 96.8% of Child Protection Plans had been reviewed within timescale.

Children subject to a Child Protection Plan for a Second or Subsequent Time

The Safeguarding Board is keen to ensure that children are not failing to access the appropriate services they need when they are subject to a Child Protection Plan which leads them to become subject to a Plan for a second or subsequent time (NI065). LSCB therefore monitors the number of children placed on Protection Plans for a second or subsequent time. At the end of March 2013 53 children who had become subject to a Child Protection Plan during the year had previously been the subject of a Child Protection Plan. This is 12.4% of all children who became subjects of Child Protection Plans throughout 2012/13. It is important to remember that if there is a change in circumstances which leads to a change in the level of risk, then it is wholly appropriate for a child to be made subject to a Child Protection Plan for a second or subsequent time.

Child protection plans lasting 2 years or more

NI064 measures the number of children ceasing to be subject to a Child Protection Plan for whom plans lasted two years or more, as a percentage of all children ceasing to be subject to a Child Protection Plan during the year. At the end of March 2013 this figure was 4.0%. Over the course of the year performance has been consistently good and is excellent when viewed with national comparisons.

Agencies work well together to ensure that there is robust and timely management of Child Protection Plans. For those children who remain subject to Plans for more than two years this is usually a reflection of complex and changing circumstances within their homes.

Looked After Children per 10,000 population aged under 18

The measure is the number of Looked After Children per 10,000 population under 18. Over the course of the year 2012/13 there has been a consistent increase in the numbers of Looked After Children. At the end of March 2013 the figure was 42.4 per 10,000 population under 18. This is 591 children currently in the care of Lincolnshire Children's Services. This increase is consistent with the increase in the numbers of Looked After Children nationally.

TAC and Number of Referrals

There were 2225 TAC cases initiated throughout 2012/13 which represents 75 children per 10,000 under 18 population in Lincolnshire. This demonstrates the ongoing commitment to children receiving early intervention. Our intention is to offer early support to families to prevent needs escalating and requiring more specialist intervention.

Private Fostering

Lincolnshire County Council has developed a comprehensive service for Privately Fostered children, and all those involved in Private Fostering, to ensure that the

authority complies with relevant legislation and meets the National Minimum Standards.

There is a good partnership approach to the safeguarding of children and young people who are privately fostered. There is an on-going process to raise awareness of Private Fostering. At the end of March 2013 there had been 69 notifications of potential Private Fostering cases. Of these 89.9% of visits and assessments were completed within timescale which is a further improvement on last year's performance which was 88%.

LSCB Finance

Income 2012/13

Partner Agency Contributions 2012/13

Agency	Contribution
Children's Services	£93,132
Health	£42,370
Police	£42,370
Probation	£8,390
West Lindsey DC	£2,936
East Lindsey DC	2,936
Boston Borough Council	£2,936
South Kesteven DC	£2,936
North Kesteven DC	£2,936
Lincoln City Council	£2,936
South Holland DC	£2,936
Lincolnshire Fire and Rescue	£2,936
Safer Communities	£30,00
Training Income	£86,268

Budget Totals	£326,018
----------------------	-----------------

The LSCB had, at the end of 2012/13 **£249,937.58** in Reserves.

Expenditure 2012/13

Narrative	Expenditure
Staffing	£230,490
Travel	£14,040
Consultancy and Legal Costs	£54,390
Telephone and IT Services	£9,770
Room Hire	£3,015
Training Expenditure	£19,715
Stationery and Printing	£820
Equipment, Materials and Stationery	£24,650
Total	£339,620
Overspend to be drawn down from Reserves	£13,602

Specific Expenditure relating to Child Death Review and Serious Case Reviews

In 2012/13 the LSCB spent £39,201 on commissioned independent consultants so undertake reviews, including Serious Case Reviews.

Version 2

In relation to Child Deaths the only expenditure in 2012/13 was in costs associated with staffing which amounted to £10,000.